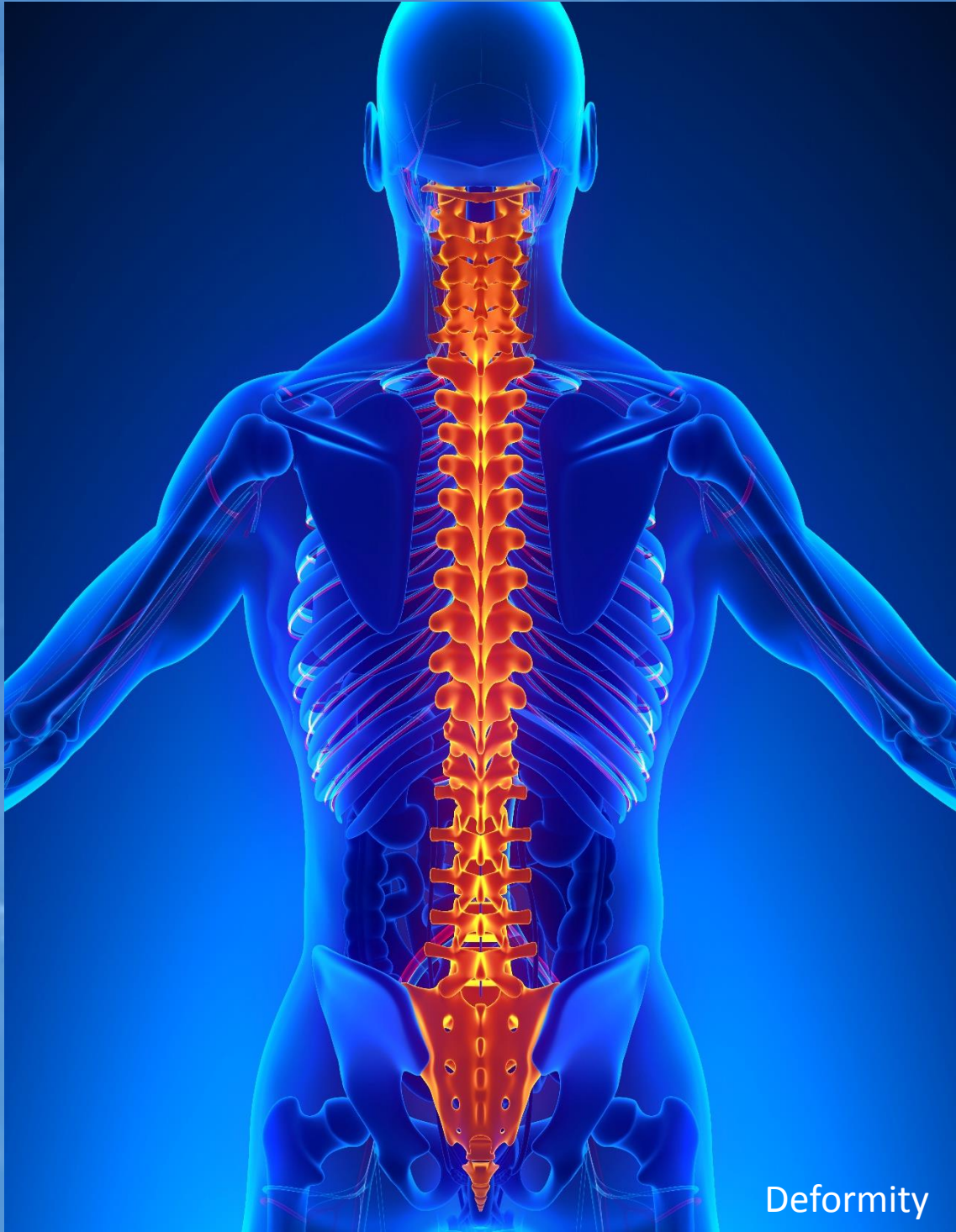




CANAVERAL

PEDICLE SCREW SYSTEM



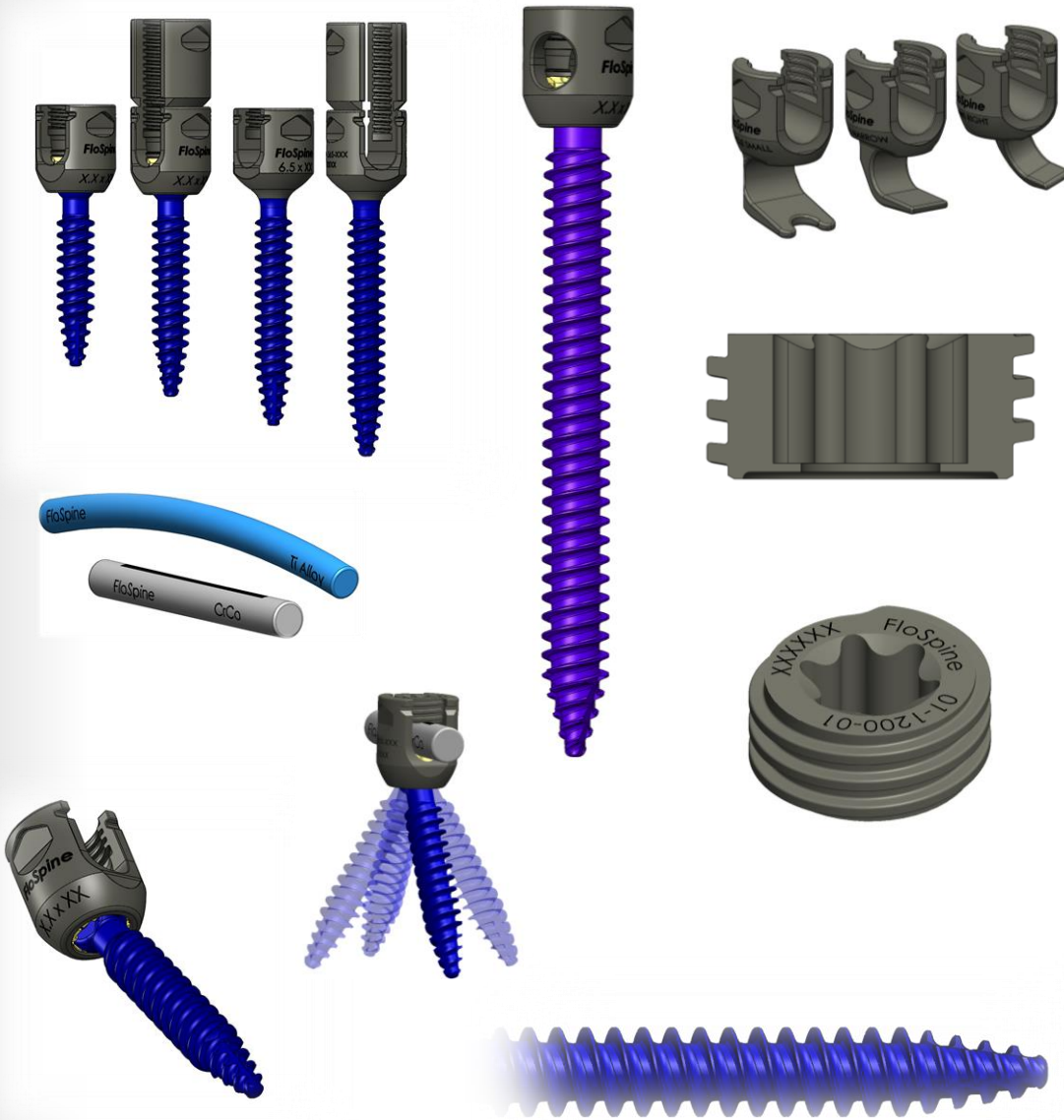
We've Got
Your Back™

Deformity

SUPERIOR VERSATILITY

- Implant options and materials to address complex pathologies
- Standard Poly, Reduction Poly, Mono, Mono Reduction, Uniplanar, closed, & hook varieties

- Standard Poly, Reduction Poly, Mono, Mono Reduction, Uniplanar, closed, & hook varieties

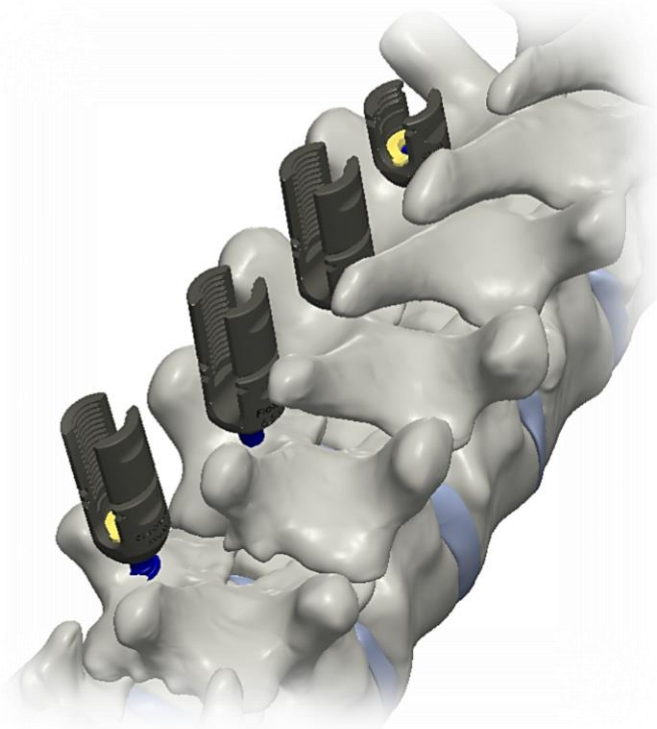


The Canaveral Deformity System is designed to treat advanced complex deformity conditions while offering superior adaptability to meet tomorrow's surgical demands.

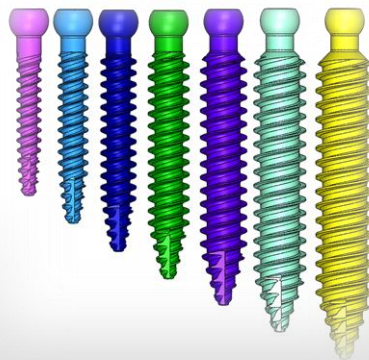
THE DIFFERENCE

SUPERIOR PERFORMANCE

- Strong headbody easily manages loads in excess of the most demanding kyphotic and scoliotic curves
- Multiple options for curve correction and derotation combined with cortical/cancellous thread form offers confidence in construct integrity
- Reverse buttress set screw with direct rod gripping eliminates cross threading and supplies enhanced grip strength
- CoCr rods in 5.5mm and 6.0mm provide confidence in correction stabilization



- ✓ Low Profile Headbody
- ✓ 5.5mm & 6.0mm Diameter rods, Ti & CoCr, Straight and Pre-lordosed
- ✓ Friction Style Headbody
- ✓ Pre-Assembled and Modular Options
- ✓ EASYSTART™ Anti-Cross-threading Set Screw Facilitates Introduction
- ✓ Self-Tapping, Dual Lead, Optimized Threadform for Fast Delivery and Superior Pull Out Resistance
- ✓ 60° Full Conical Motion Provides Exceptional Anatomic Adjustability
- ✓ Comprehensive Screw Offering, 4.5mm-10.5mm



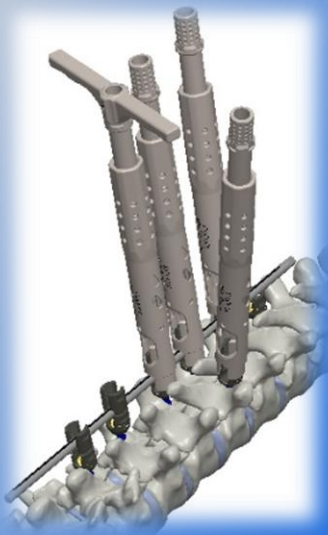
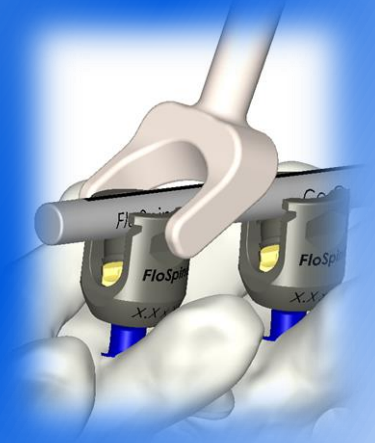
		Screw Length (mm)												
		25	30	35	40	45	50	55	60	70	80	90	100	110
Screw Diameter (mm)	4.5	*	*	*	*	*								
	5.5	*	*	*	*	*	*	*						
	6.5	*	*	*	*	*	*	*	*					
	7.5		*	*	*	*	*	*	*					
	8.5			*	*	*	*	*	*	*	*	*	*	*
	9.5			*	*	*	*	*	*	*	*	*	*	*
	10.5				*	*	*	*	*	*	*	*	*	*

CANAVERAL DEFORMITY INSTRUMENTATION

EASE

Canaveral Deformity System instrumentation is designed for maximum ease of use and versatility

- Performance Screw Drivers with exceptional delivery control
- Multiple Reduction Options: Rocker Forks, Pistol Grip and Threaded Power Rod Persuaders
- Derotation towers with TransGrip™ connectors
- Fully adapted for use with O-arm, guidance, and robotically enabled pedicle targeting systems
- Standard and reduced length instruments for optimization under flourescopy



Persuaders

- Direct downward press provides fast application to screw head
- Threaded release at end of range allow easy removal
- Fast Dual Lead thread and ergo-grip T-handle provide fast reduction
- Design provides visual and tactile Indicators when seated

TransGrip™ Connectors

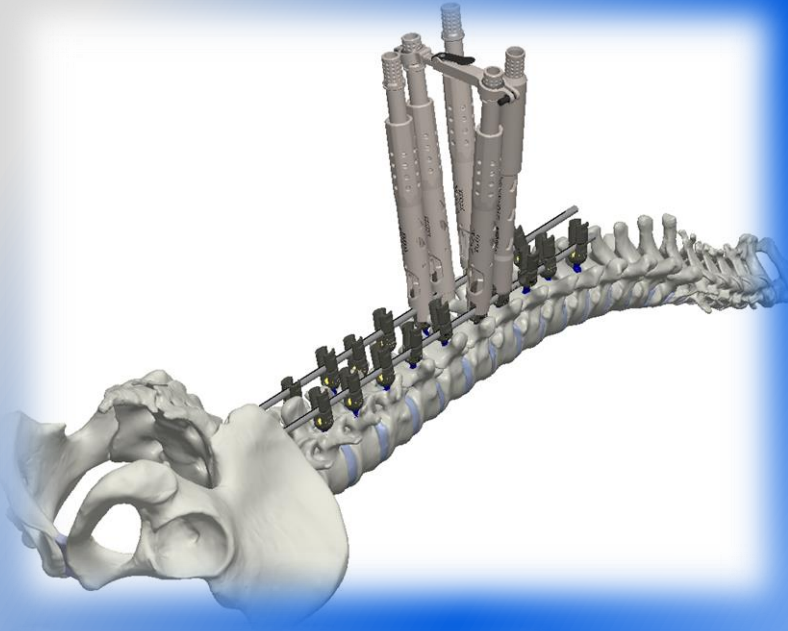
- Include quick couple and release for enhanced ease of use
- Fast telescoping adjustment allows streamlined set-up and breakdown



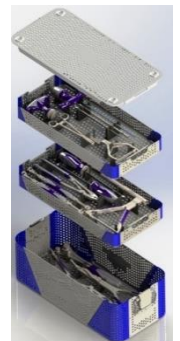
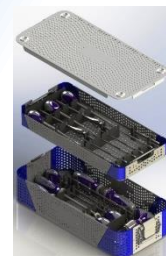
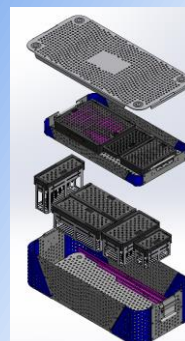
VERSATILITY

INNOVATION

The Canaveral Deformity System raises the standard for implant variety and instrument versatility



- ✓ Elite Locking Screw Drivers
- ✓ Screw Inserter and Headbody delivery instruments for in-situ assembly
- ✓ Matched color coded taps to screw diameters for fast screw prep
- ✓ Multiple handle options to meet a variety of surgeon preferences
- ✓ Chrome coated instruments extend instrument life and quality
- ✓ Sterilization Cases follow surgical procedure

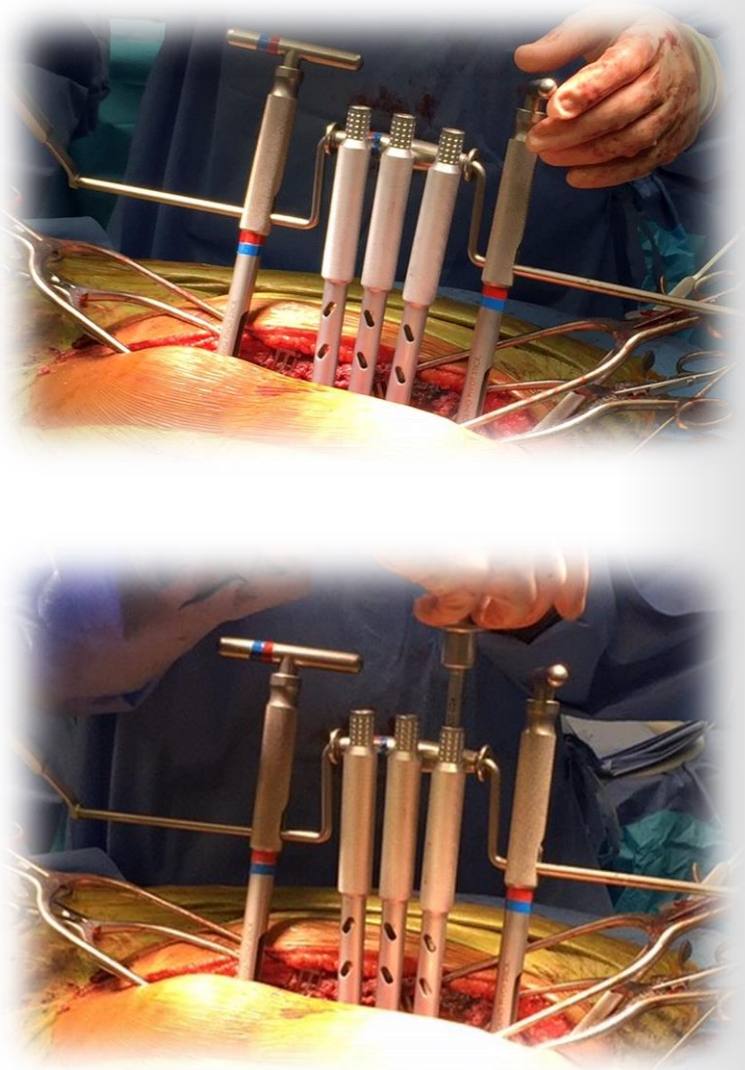


Glide™ De-Rotation System

From FloSpine

Integrating with Canaveral Screws, the Glide De-Rotation System provides fast, superior derotation to the most demanding deformity curves.

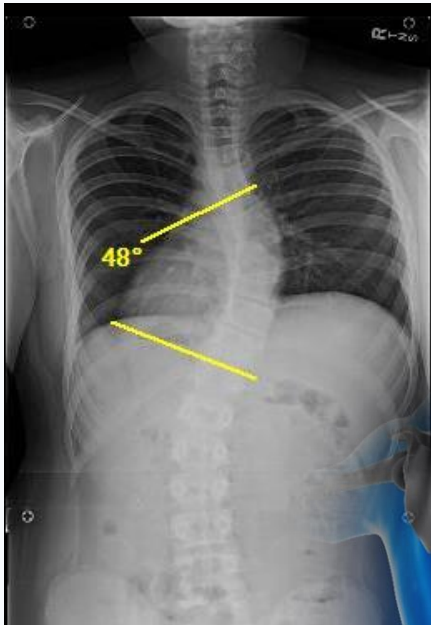
- Following screw and rod placement, derotation sleeves are placed over screw on the desired levels for derotation
- End sleeves are placed at the curve aperture levels
- Glide™ Crankshaft is positioned into end sleeves with roller contacting derotation sleeves
- Crankshaft is rotated and locked into position achieving and holding full segmental derotation
- Set Screws are introduced to lock rod position



- ✓ Fast Setup
- ✓ Excellent Correction
- ✓ Adapts Easily to a Variety of Curves

ACHIEVEMENTS

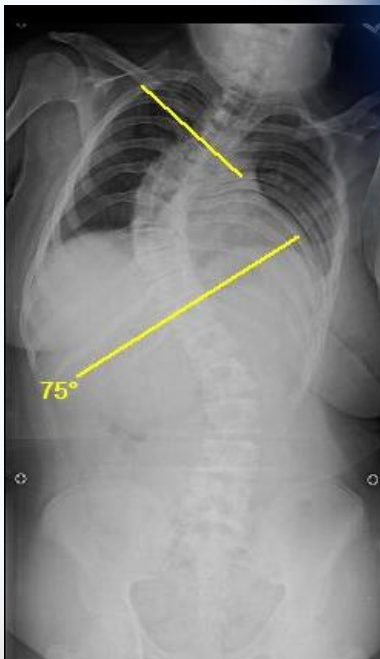
The Canaveral Deformity system is reaching new heights and striving for the very best treatments in idiopathic and congenital deformity.



PreOp



PostOp



PreOp



PostOp



INDICATIONS

The FloSpine Canaveral Pedicle System is intended for posterior, noncervical pedicle fixation as an adjunct to fusion in skeletally mature patients using autograft and/or allograft for the following indications: degenerative disc disease (DDD) (defined as back pain of discogenic origin with degeneration of the disc confirmed by history and radiographic studies); spondylolisthesis; trauma (i.e., fracture or dislocation); spinal stenosis; curvatures (i.e., scoliosis, kyphosis, and/or lordosis); tumor; pseudoarthrosis; and failed previous fusion.

When used for fixation to the ilium, the offset connectors of the Canaveral Pedicle Screw System must be used in conjunction with pedicle screws placed at the S1 or S2 spinal levels.

When used for posterior non-cervical pedicle screw fixation in pediatric patients, the Canaveral Pedicle Screw System implants are indicated as an adjunct to fusion to treat adolescent idiopathic scoliosis. The Canaveral Pedicle Screw System for pediatric use is intended to be used with autograft and/or allograft. Pediatric pedicle screw fixation is limited to the posterior approach.