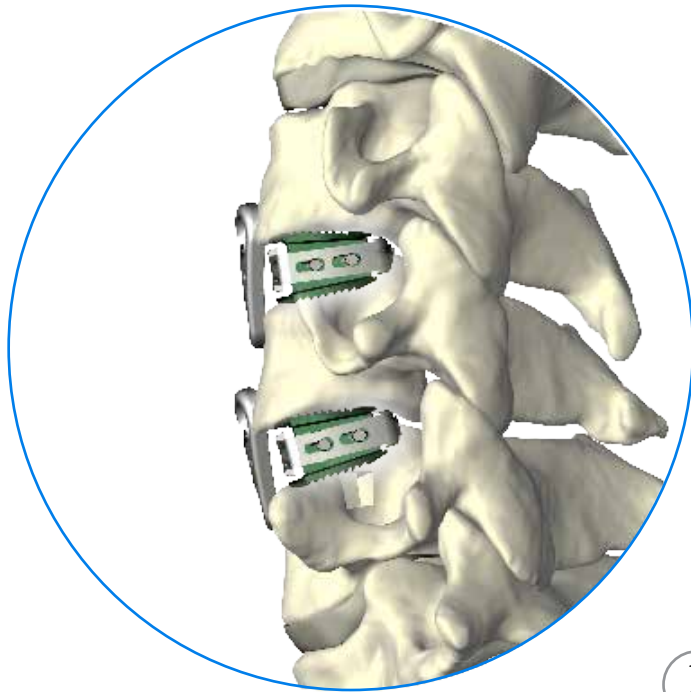
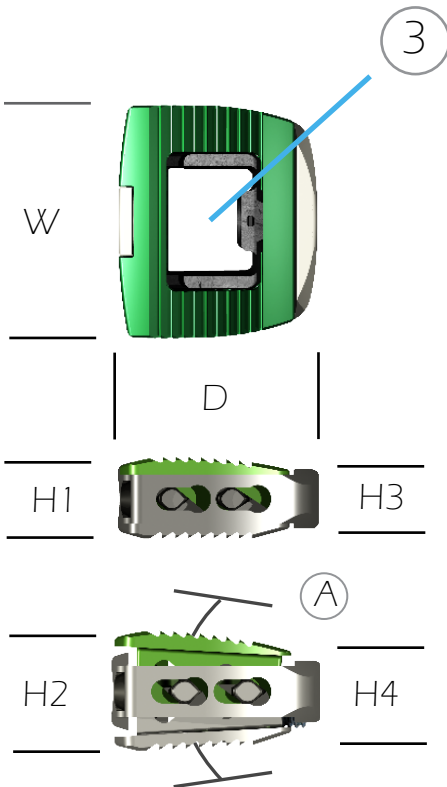
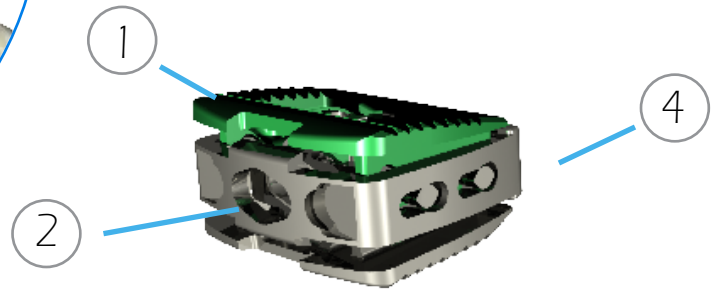


HiJAK AC, the **FIRST** expandable cervical inter-body with **ADJUSTABLE LORDOSIS**, was designed for the surgeon who recognizes the importance of lordotic restoration and sagittal balance of the spine.



Additional benefits include:

- ① AN OSTEO - PROMOTIVE ENDPLATE SURFACE
- ② POST EXPANSION GRAFT - PACKING CAPABILITY
- ③ AN UNOBSTRUCTED GRAFT CHAMBER
- ④ *HYPER - LORDOTIC OPTIONS (UP TO 20 deg)



SIZE

SMALL
W 15 mm
D 13 mm

	ANTERIOR		POSTERIOR		LORDOSIS
	H1	H2	H3	H4	(A)
7mm	4.5	7	4	5.25	7deg
8mm	5.5	8	4	5.25	12deg
9mm	6.5	9	5	6.25	12deg
8mm HL*	5.5	8	4	5	20deg
9mm HL*	6.5	9	5	6	20deg

LARGE
W 17 mm
D 15 mm

7mm	4.5	7	4	5.25	7deg
8mm	5.5	8	4	5.25	12deg
9mm	6.5	9	5	6.25	12deg